

THE PEOPLE'S PLAN



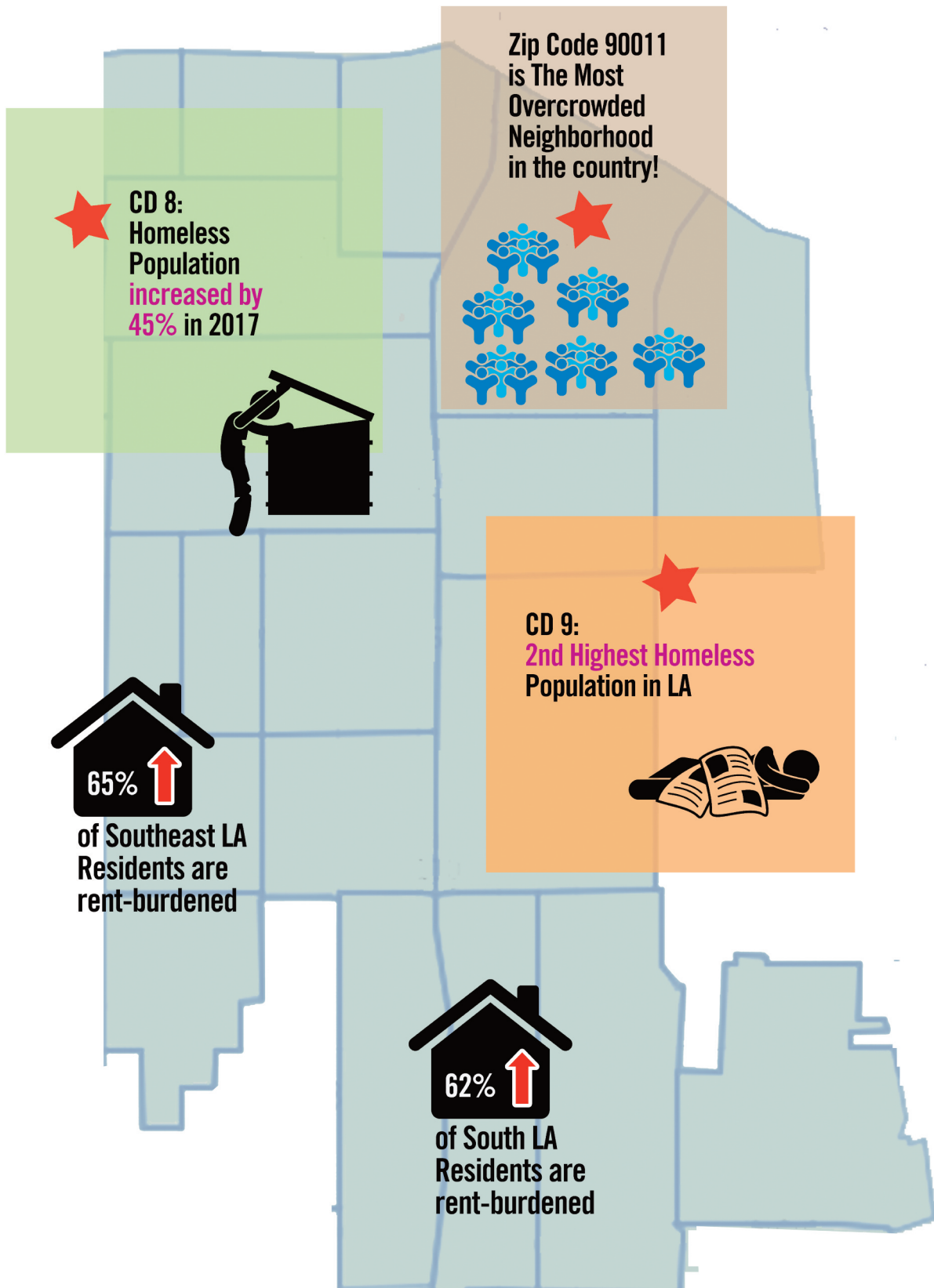
EQUITABLE DEVELOPMENT IN SOUTH LOS ANGELES

unidad-la.org/peoplesplan



Overview

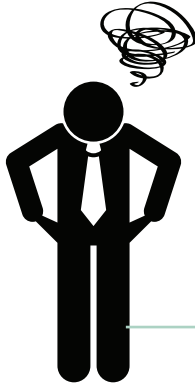
South Los Angeles has among the highest rates of homelessness, overcrowding and rent-burdened households.





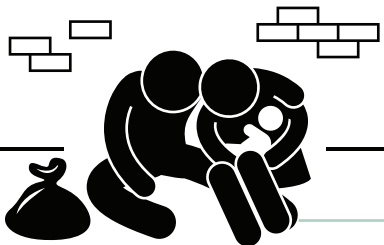
The Challenges We Face

Most critical in SLA and SELA CPAs.



SELA CPA residents face greater economic hardship than anywhere else in the city (SLA placed 4th).

More than half of the community's children live in poverty

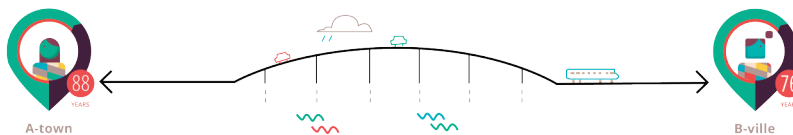


More homeless men and women live in the area than anywhere else in the city

Residents face severely overcrowded housing and poor access to healthy retail food.



1 MILE
12 YEARS OF LIFE



Residents of these communities may live as much as 12 fewer years than residents of wealthier parts of town



Create Displacement-Free Investment Zones

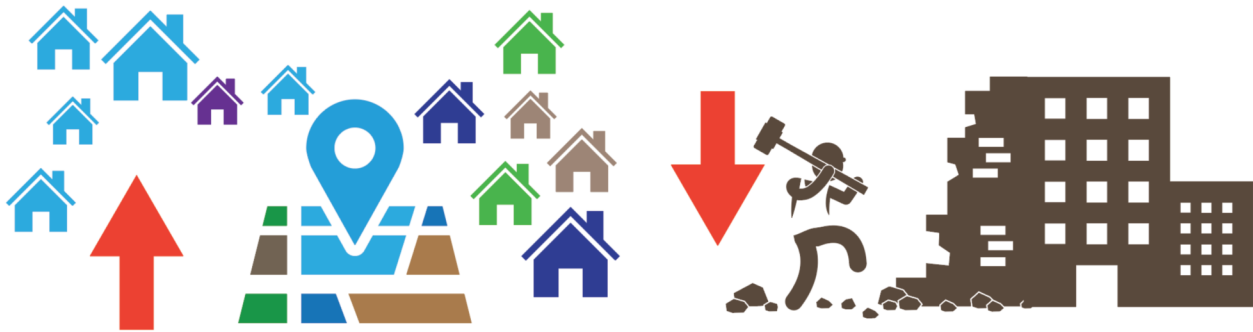
Produce + Preserve + Protect =
Net Gain of Affordable Housing Opportunities

PRODUCE



- Ensure strong replacement and anti-displacement protections in the CPIO Incentive Program
- Increase the incentives for 100% Affordable Housing projects by creating a Transfer of Floor Area Ratio (TFAR) Program.
- Establish inclusionary requirements for for-sale housing development
- Enhance opportunities for affordable housing developers and community land trusts to acquire property.

PRESERVE



- Create **Displacement Free Zones** (aka No Net Loss)
- Minimize the loss of rent-controlled homes by regulating condo conversions and demolitions

PROTECT



- Require new developments to provide existing **tenants a right to return**
- Establish **proactive coordination** between HCID and tenant rights organizations.
- Enhance RSO enforcement
- Establish a Low-Income Renter Advisory Commission (**LIRAC**)